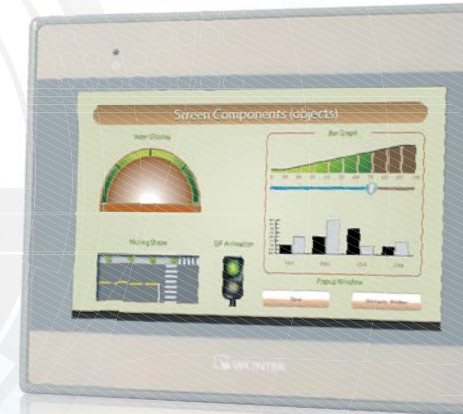
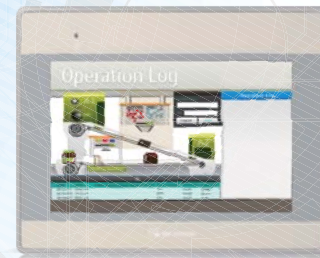


EMT SERIES

BOODIE

Professional In
Human Machine Interface





Perfectly Designed

Extremely Easy

Professional in Human Machine Interface



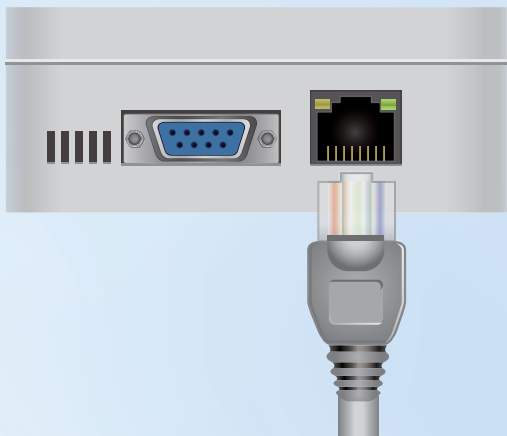
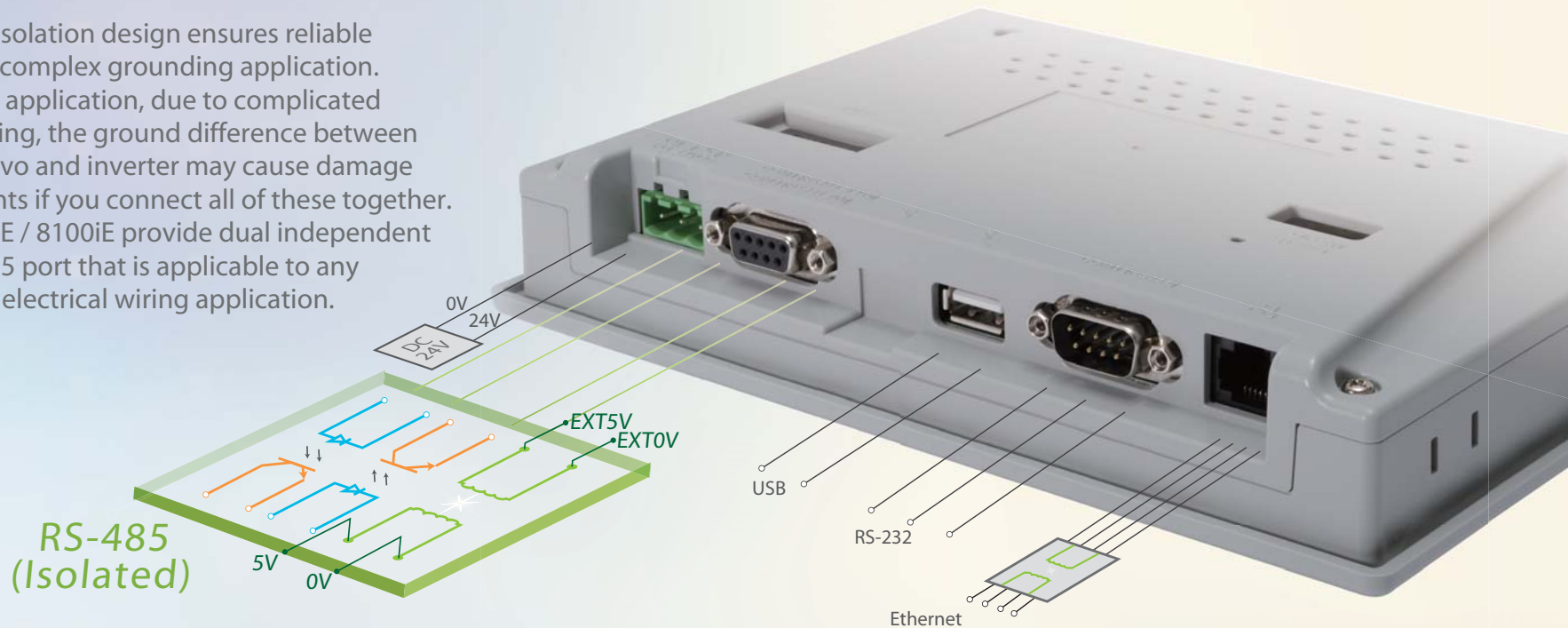
MT8000iE leads the HMI evolution!

**Ultra slim HMI has only
34mm thickness.**

- Brand new look and color design with perfect aesthetic sense.
- RS-485 dual isolation design protects HMI in complex grounding application.
- PCB coating process ensures high reliability in harsh environment.
- Upgraded EasyBuilder software contains embedded PLC TAG and provides enhanced security.
- Comply with various requirements of CE certification.

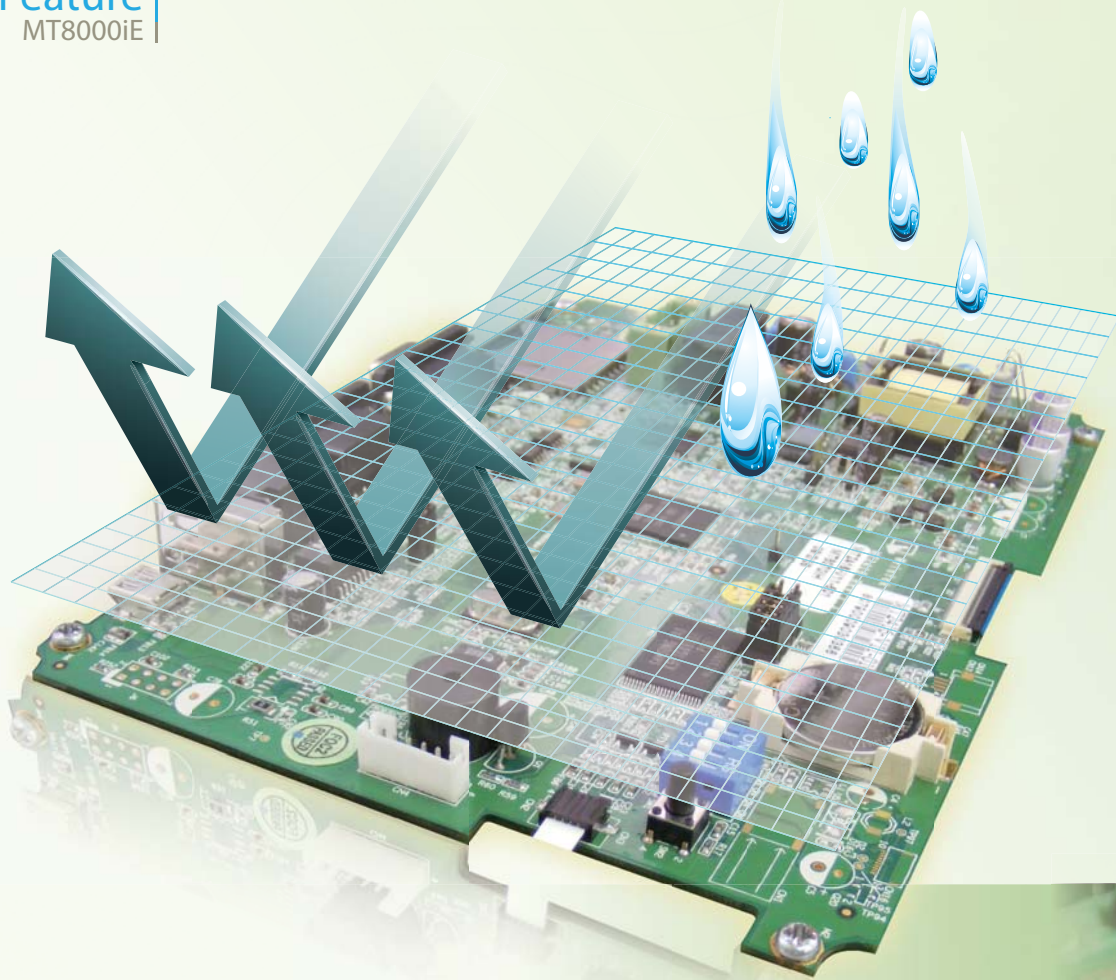
RS-485 Dual Isolation Design

RS-485 dual isolation design ensures reliable operation in complex grounding application. In some field application, due to complicated electrical wiring, the ground difference between HMI, PLC, servo and inverter may cause damage of components if you connect all of these together. The MT8070iE / 8100iE provide dual independent ground RS485 port that is applicable to any complicated electrical wiring application.



Standard Ethernet 10/100M connection and Com1: RS-232/RS-485 2w/4w, Com3:RS-485 2w

Support MODBUS TCP/IP communication protocol, and other types of PLC network communication module. (Allen-Bradley, Siemens S7-200/300/400/1200 etc.)

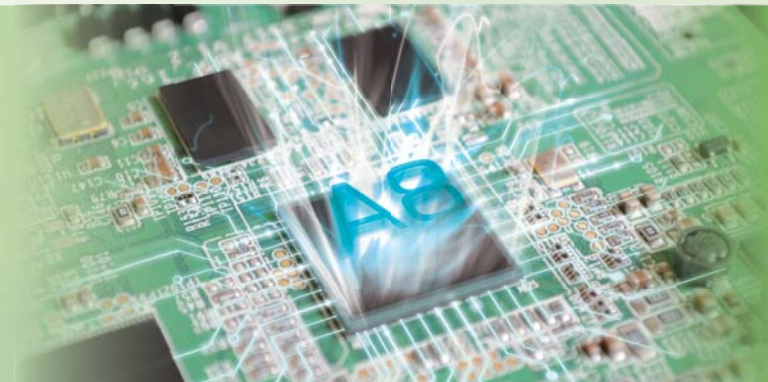


PCB Coating Process

PCB coating process ensures high reliability to resist corrosion in harsh environment.

Faster Cortex A8 Processor

The high speed Cortex-A8 microprocessor running at 600MHz shows outstanding performance in data and graphics processing for complex EB project.





Slim design

The slim design that covers every detail surpasses your requirements and flexibly fits in any environment you place the device.

New aesthetic design

The color design suits various devices and automation environments perfectly.

4.3"~10.1" LCD of Complete Production Line

Weintek brings you HMIs with various sized LCD 4.3"~10.1" and rich functionalities to fit in diverse industrial and automation environments.



Waterproof / IP65 Rating

All models satisfy NEMA 4/IP65 rating and operate under 0~50°C.



Multiple Communication Interfaces

A variety of interfaces: RS-232/485(2W or 4W) and Ethernet.

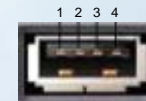
ETHERNET

RS-232/485
(2W or 4W)

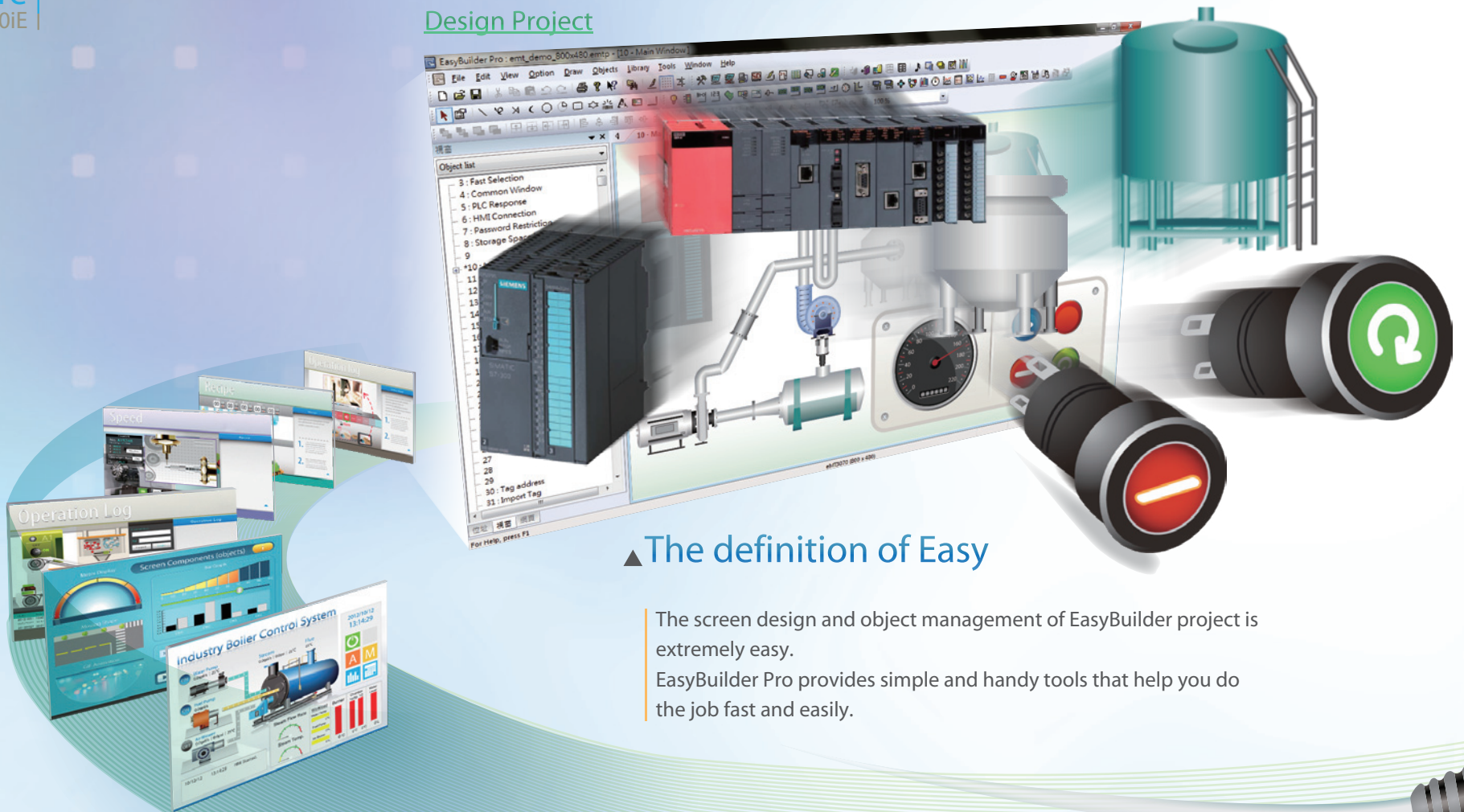


USB Host Interface

USB interface not only supports uploading and downloading projects or data storing, but also allows directly connecting with printers, barcode scanners, mouse, and PLC.



Design Project



▲ The definition of Easy

The screen design and object management of EasyBuilder project is extremely easy.

EasyBuilder Pro provides simple and handy tools that help you do the job fast and easily.

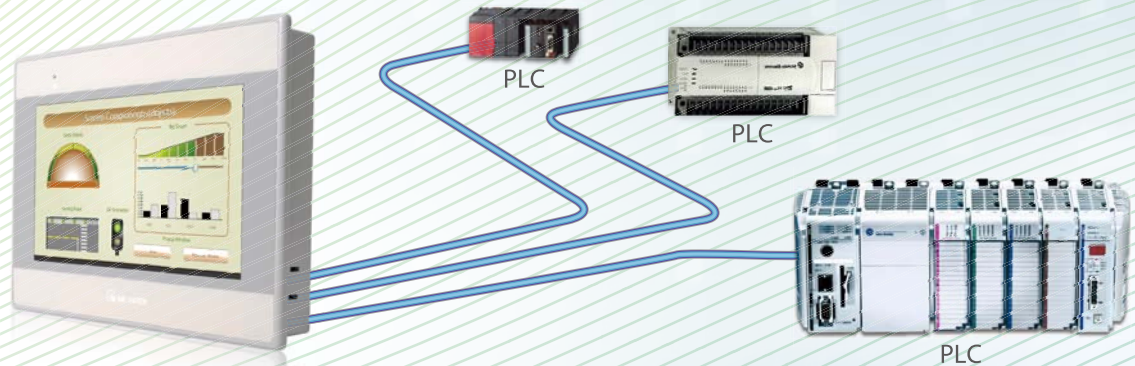
Build projects
that automate everything

[Project Download](#)



Easy Builder Pro

Experience the easiest to learn and intuitive editor software. More than 250 communication drivers are supported for quick connection.



◀ Your personal engineer

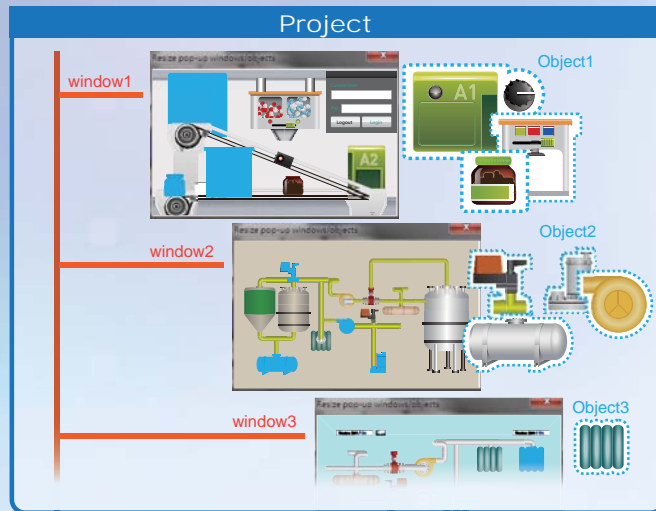
You don't have to be an expert in writing program languages or control management. Enjoy the easy design process and directly download the EB project to HMI via Ethernet or USB stick.

▲ The most complete support

Our HMI supports even more powerful connectivity that includes PLC, barcode scanner, temperature controller, etc. You can quickly connect devices and deploy in your environment.

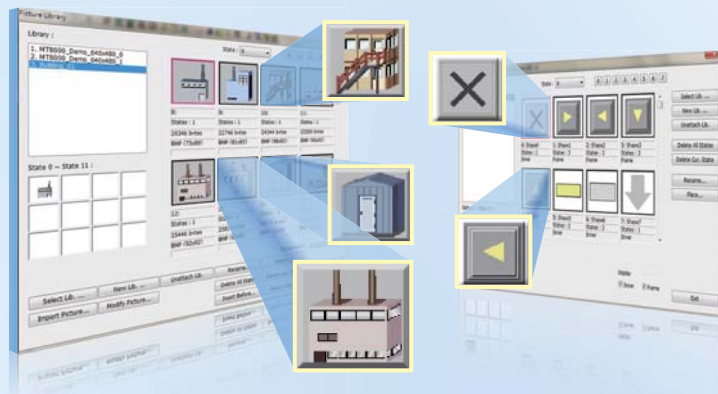
Smart Window Management (Window Tree)

- Display the numbers of windows and window names.
- Directly select window to open, view, and edit.
- Display all the object names and addresses on window.
- Window Preview shows the appearance of the windows in thumbnails.



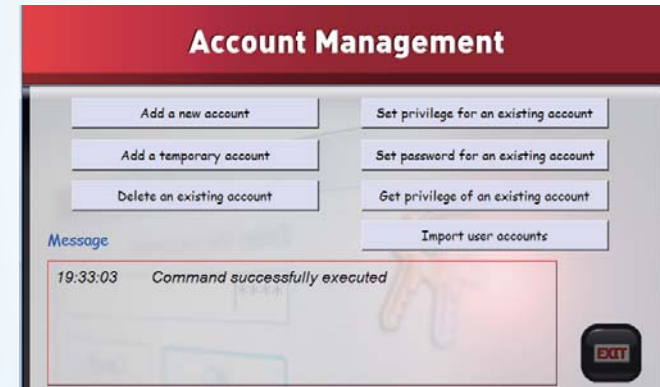
Diverse Theme Picture Libraries Enrich Your Project (Picture Libraries and Shape Libraries)

- Different types of industrial graphics are ready for use.
- Thousands of designs are provided to choose from and apply to.
- Various formats are supported for a more flexible application.



Enhanced Account Management

- Add/Delete Accounts
- Modify Privileges
- Reset Passwords



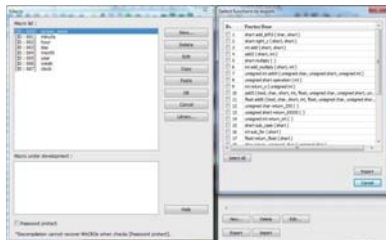
No Need to Input Addresses Repeatedly and Hasten Project Designing. (Address Tag Library)

- Easy Address Tag setting for the designers to specify Tags that are more readable for different addresses.
- Directly add and edit Tag in Address Tag Library, or export to Excel for designing then import back to the Library.

No.	Address tag name	PLC name
19	LB-9018 : disable mouse cursor (set ON)	Local HMI
20	LB-9019 : disable/enable buzzer	Local HMI
21	LB-9020 : show (set ON)/ hide (set OFF) system setting bar	Local HMI
22	LB-9021 : reset current event log (set ON)	Local HMI
23	LB-9022 : delete the earliest event log file on HMI memory (...)	Local HMI
24	LB-9023 : delete all event log files on HMI memory (set ON)	Local HMI

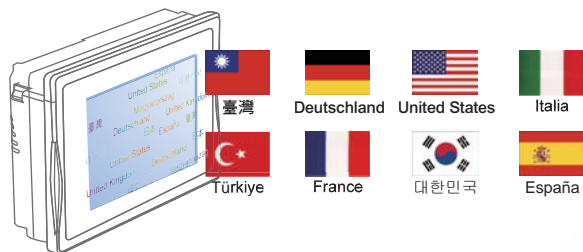
Powerful Macro Editor and Commands

- Macro syntax is similar to VB-Script. Users can use Macros to design the desired additional features.
- Powerful Macro commands support user defined protocols (free protocol) for other communication devices.
- Sophisticated features are designed for processing complex expressions and string manipulation. This enhances the communication between users and projects.
- The new Macro editing window with toolbars makes designing Macros extremely easy.
- Supports the creation of user-defined Macro Libraries. This feature allows Macro Libraries to be used in future HMI project designs.



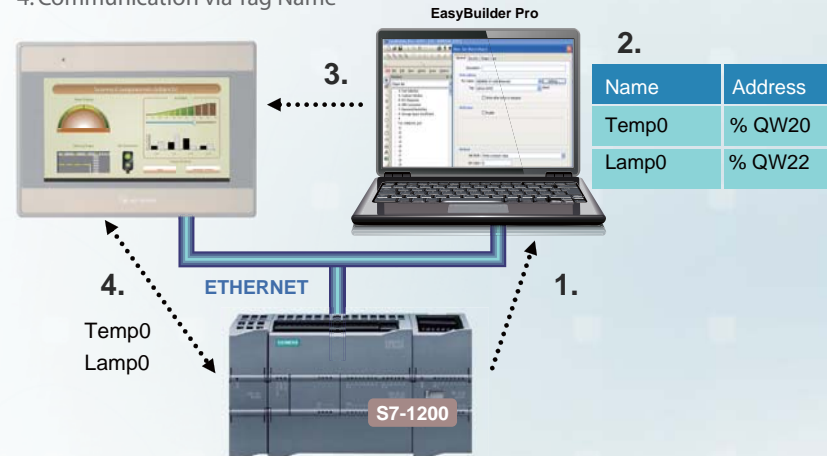
Use Label Tags to Display Multiple Languages

Label Tag Library is a spreadsheet-like display for inputting text in different languages for application in a project. Export Label Tags in CSV format to Excel for editing. Language contents can then be edited further and imported to the Label Tag table.



Address Tag

1. Get Tag Information
2. Edit Project with Tag Name
3. Download Project to HMI
4. Communication via Tag Name



Extended User Accounts and Access Levels

- Extended user accounts (128)
- Extended access levels (14)



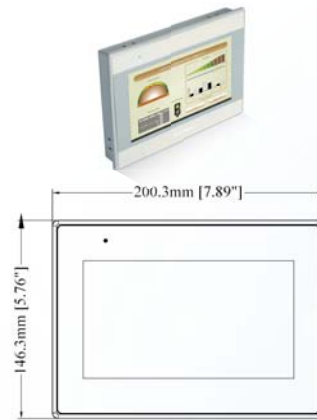
Powerful Connectivity



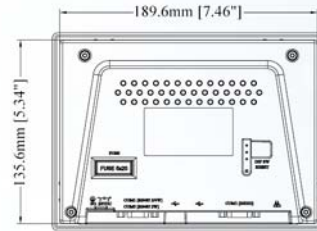
Specification |

MT8000iE

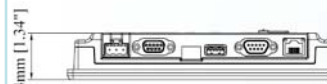
	Model	MT8070iE
Display	Display	7" TFT
	Resolution (WxH dots)	800 x 480
	Brightness (cd/m ²)	350
	Contrast Ratio	500:1
	Backlight Type	LED
	Backlight Life Time	30,000 hr.
	Colors	65536
Touch Panel	Type	4-wire Resistive Type
	Accuracy	Active Area Length(X)±2%, Width(Y)±2%
Memory	Storage(MB)	128
	RAM (MB)	128
Processor		Faster Cortex A8 32Bit RISC 600MHz Processor
I/O Port	USB Host	USB 2.0 x 1
	Ethernet	1 RJ45 port (10/100 Base-T)
	COM Port	Com1: RS-232/RS-485 2w/4w, Com3:RS-485 2w
RTC		Built-in
Power	Input Power	24±20%VDC
	Power Consumption	350mA@24VDC
	Voltage Resistance	500VAC (1 min)
	Isolation Resistance	Exceed 50MΩ at 500VDC
	Vibration Endurance	10 to 25Hz (X,Y,Z direction 2G 30 minutes)
Specification	Enclosure	Plastic
	Dimensions WxHxD	200.3 x 146.3 x 34mm
	Panel Cutout (mm)	192 x 138
	Weight (kg)	Approx.0.6 kg
Environment	Protection Structure	NEMA4 / IP65
	Storage Temperature	-20°~60°C (-4° ~ 140°F)
	Operating Temperature	0° ~ 50°C (32° ~ 122°F)
Certificate		10% ~ 90% @ 40°C (non-condensing)
		EN 55022:2010 Class B ;EN 55024:2010 ;EN 61000-3-2:2006+A2:2009 ;EN 61000-3-3:2008;AS/NZS CISPR 22:2009+A1:2010
Software		EasyBuilder Pro



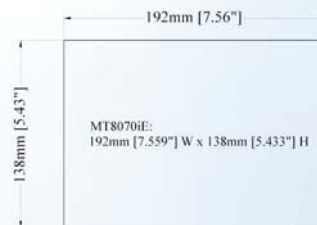
Front View



Rear View



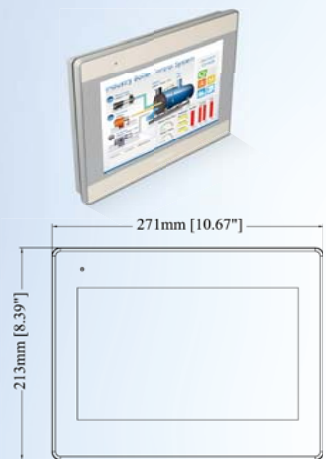
Bottom View



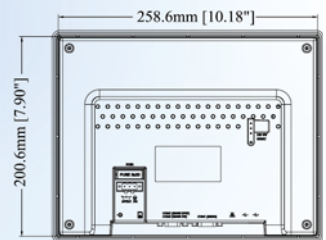
Cutout Dimensions



Model		MT8100iE
Display	Display	10.1" TFT
	Resolution (WxH dots)	800 x 480
	Brightness (cd/m ²)	300
	Contrast Ratio	500:1
	Backlight Type	LED
	Backlight Life Time	30,000 hr.
	Colors	65536
Touch Panel	Type	4-wire Resistive Type
	Accuracy	Active Area Length(X)±2%, Width(Y)±2%
Memory	Storage(MB)	128
	RAM (MB)	128
Processor		Faster Cortex A8 32Bit RISC 600MHz Processor
I/O Port	USB Host	USB 2.0 x 1
	Ethernet	1 RJ45 port (10/100 Base-T)
	COM Port	Com1: RS-232/RS-485 2w/4w, Com3:RS-485 2w
RTC		Built-in
Power	Input Power	24±20%VDC
	Power Consumption	400mA@24VDC
	Voltage Resistance	500VAC (1 min)
	Isolation Resistance	Exceed 50MΩ at 500VDC
	Vibration Endurance	10 to 25Hz (X,Y,Z direction 2G 30 minutes)
Specification	Enclosure	Plastic
	Dimensions WxHxD	271 x 213 x 40mm
	Panel Cutout (mm)	260 x 202
	Weight (kg)	Approx.1.3 kg
Environment	Protection Structure	NEMA4 / IP65
	Storage Temperature	-20°~60°C (-4° ~ 140°F)
	Operating Temperature	0° ~ 50°C (32° ~ 122°F)
	Relative Humidity	10% ~ 90% @ 40°C (non-condensing)
Certificate		EN 55022:2010 ; EN 55024:2010; EN 61000-3-2:2006+A2:2009 ; EN 61000-3-3:2008; AS/NZS CISPR 22:2009+A1:2010
Software		EasyBuilder Pro



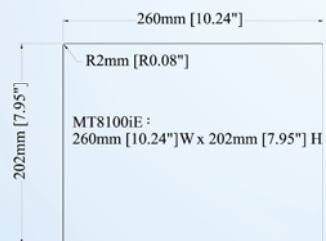
Front View



Rear View



Bottom View



Cutout Dimensions

Model		MT8050iE
Display	Display	4.3" TFT
	Resolution (WxH dots)	480 x 272
	Brightness (cd/m ²)	300
	Contrast Ratio	500:1
	Backlight Type	LED
	Backlight Life Time	30,000 hrs.
	Colors	65536
Touch Panel	Type	4-wire Resistive Type
	Accuracy	Active Area Length(X)±2%, Width(Y)±2%
Memory	Storage(MB)	128
	RAM (MB)	64
Processor		ARM11 32Bit RISC 400MHz Processor
I/O Port	USB Host	USB 2.0 x 1
	Ethernet	1 RJ45 port (10/100 Base-T)
	COM Port	Com1: RS-232/RS-485 2w/4w, Com3:RS-485 2w
RTC		Built-in
Power	Input Power	24±20%VDC
	Power Consumption	250mA@24VDC
	Voltage Resistance	500VAC (1 min)
	Isolation Resistance	Exceed 50MΩ at 500VDC
	Vibration Endurance	10 to 25Hz (X,Y,Z direction 2G 30 minutes)
Specification	Enclosure	Plastic
	Dimensions WxHxD	128 x 102 x 38mm
	Panel Cutout (mm)	119 x 93
	Weight (kg)	Approx.0.3 kg
Environment	Protection Structure	NEMA4 / IP65
	Storage Temperature	-20°~60°C (-4° ~ 140°F)
	Operating Temperature	0° ~ 50°C (32° ~ 122°F)
	Relative Humidity	10% ~ 90% @ 40°C (non-condensing)
Certificate		EN 55022:2010 ; EN 55024:2010; EN 61000-3-2:2006+A2:2009 ; EN 61000-3-3:2008; AS/NZS CISPR 22:2009+A1:2010
Software		EasyBuilder Pro



Coming soon



Taiwan · Weintek

Since the foundation of the company in October of 1995, Weintek Labs., Inc. has been committing itself to being a leading-edge designer and manufacturer of graphic operator interfaces, also known as HMI (Human Machine Interfaces), in Taiwan. We took our rich experience as HMI specialists and set the HMI product standard with state-of-the-art technology, efficient manufacturing, conscientious and careful testing, and global specialized support.

The company's missions are to provide its customers with quality products and superior service as well as to share the fruits of its good teamwork with all of its employees, by which we are able to achieve the goals of establishing a reputation as a leading brand in the industry and ensuring sustainability of the operation and development of enterprise.



WEINTEK LABS., INC.

Taiwan

Address: 9F., No.910, Zhongzheng Rd., Zhonghe Dist., New Taipei City 23586, Taiwan

Tel: +886-2-22286770

Fax: +886-2-22286771

Website: www.weintek.com

Sales: salesmail@weintek.com

Product Support: servicemail@weintek.com

English | Feb 2013



ISO 9000: 2008